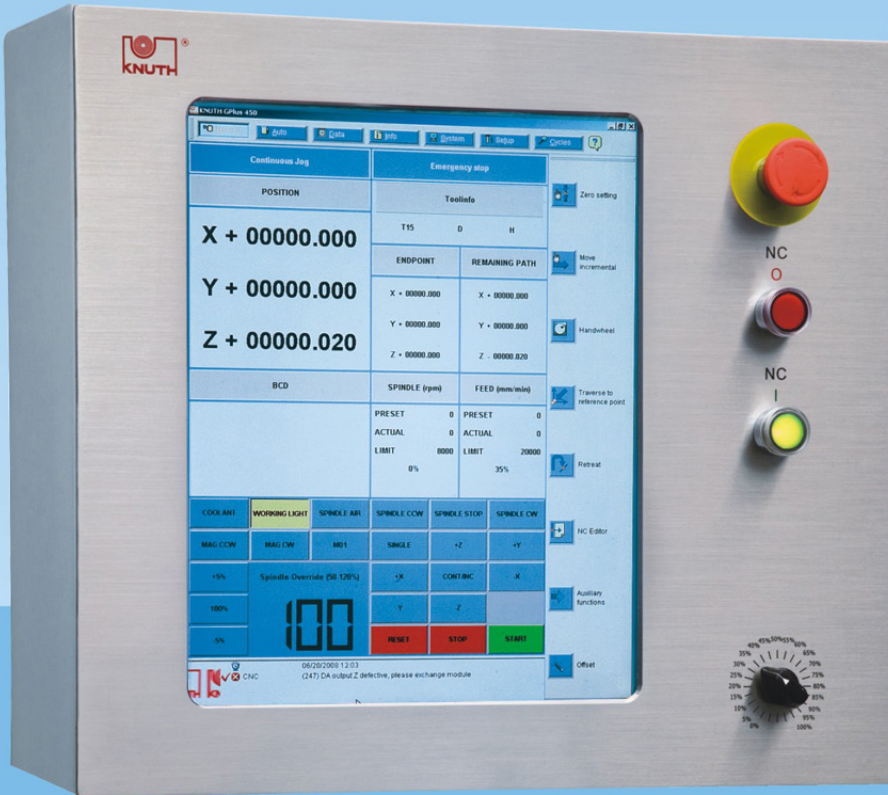




Germany KNUTH GPlus 450 Control

The Windows based CNC Control for milling machines, lathes, and cylindrical grinding machines



Overview of M Cycles (Milling)

- Milling Cycles
- Circular pockets
- Rectangular pockets
- Arc pockets
- Face milling

Drilling Cycles

- Basic drilling
- Drilling with dwell time
- Deep-hole drilling
- Tapping
- Reaming

Drilling Patterns

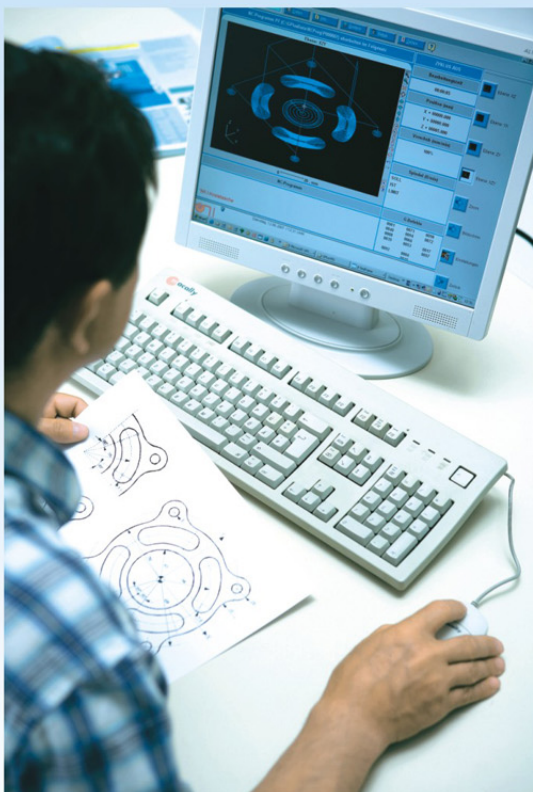
- Hole series
- Hole circle/segment
- Free drilling positioning
- Rectangle/parallelogram
- Grid

Overview of Cycles (Turning)

- Plain turning
- Facing
- Taper turning
- Radius turning
- Plunge-cut
- Recessing forms E and F
- Thread turning
- Multiple thread turning
- Contour turning

Overview of G Cycles (Grinding)

- Cylindrical grinding, oscillating
- Face grinding, oscillating
- Multiple plunge-cut (groove) – plane
- Multiple plunge-cut (groove) – linear
- Plain shoulders
- Linear shoulders



Optionally, the GPlus 450 software may be installed on a regular office PC (System Requirements: Intel processor) whereby the user interface is fully identical with the machine control user interface. This allows for a very realistic operation and programming training of newcomers. The created NC programs can be tested and simulated and are fully executable on the machine's control.